

Spray & Wipe with Bleach

When dosing concentrate chemicals always use the recommended PPE, and always read the labels to check best practice for handling both the undiluted & ready to use solutions.

Product Usage Guide

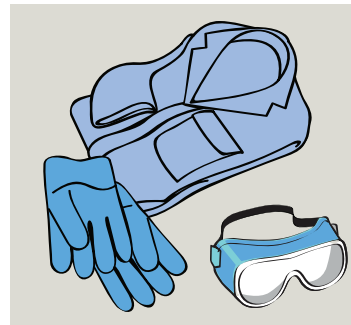
Professional



BA011-75



Instructions for use:



1 Use appropriate PPE as indicated in the safety data sheets.



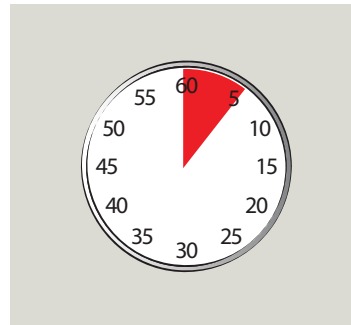
2 Place safety signs.



3 Spray solution onto cloth.



4 Wipe surface to be cleaned.



5 Allow 5 minutes contact time.



6 Wipe off with a clean, damp cloth.



7 Remove safety signs.

Areas of use



Scan for further product details

Health & Safety

Please refer to relevant COSHH Safety Data Sheet



Bleach can cause damage to carpets, fabrics, plastic, lino floor coverings and many other common materials. Do not mix with other cleaners. Keep separate from acids. Do not use on metal surfaces such as stainless steel, chrome, etc. **DO NOT USE ON METAL SURFACES OR MIX WITH ACIDS.**

